

# Results after the 6'th VetRepos trial tests (First half of 2023)

*Results from item trialing – for interpretation of feedback from trial data and QuizOne*

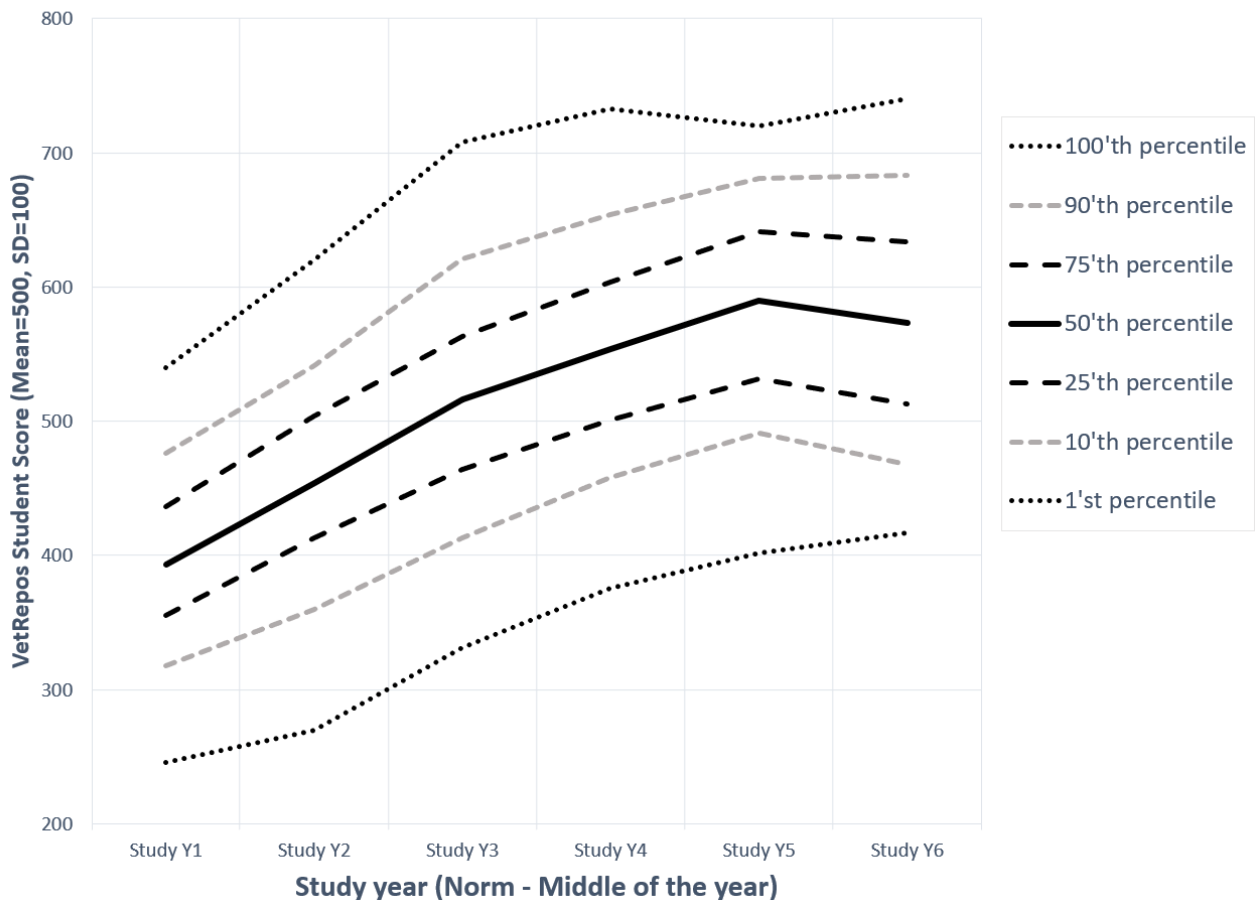
The purpose of the item trailing tests is double:

- We use the student responses to validate the test questions (Rasch analysis) and improve the test.
- We want to provide feedback to the respondents on their performance in the test.

The intention of the test is to be able to evaluate the competences a newly educated Veterinarian (the EAEVE “Day one competences”) is supposed to master.

The norm has been updated and re-estimated each time we get new data. After the 6'rd trial tests we have 1948 student responses and are able to calculate a relatively stable norm, illustrating the general pattern in study progress across study years (see figure below).

**VetRepos Scores (Estimated Growth Curves, Aug. 2023)**  
VetRepos, Data from Trial 1-6 (N=1.948)



The norm is based on a scale-score that are common for all students in the project (across universities and study year). The scale has a mean=500 and SD=100. This particular scale is commonly used by other international large-scale assessments (eg. TIMMs & PIRLs done by IEA).

As it is shown in the figure, the progress is generally largest during the first years (the learning curve is steepest), after which it is gradually declining. This is consistent with common trends in most data on educational progress. It could though seem contra- intuitive that the students in their final (here the 6'th) study year generally score lower than the year before. But it is not uncommon that a massive focus on practical skills and writing final thesis can cost a bit in the more theoretical skills and general veterinary knowledge that is the main focus in the VetRepos test.

Hopefully this illustration of the general results will be helpful for the students who want to interpret their scores. For example:

- A medium performing student (signified by the 50%-percentil – the curve in the middle) at study year 3 gets a score of 508 points.
- The best performing first-year student (90'th perc.) is performing at approximately the same level as the lowest performing students (10'th perc.) at year 6.
- The general yearly progress is about 50 points.

In the table below is shown the data behind the figure of the progress norm.

	Student average VetRepos scores (mid study year)						Measured Progress scores				
	Y1	Y2	Y3	Y4	Y5	Y6	Y1-Y2	Y2-Y3	Y3-Y4	Y4-Y5	Y5-Y6
100'th percentile	540	620	708	733	720	741	80	88	25	-13	21
90'th percentile	476	541	621	654	681	683	65	80	33	27	2
75'th percentile	436	504	563	604	641	634	68	59	41	37	-7
<b>50'th percentile</b>	<b>393</b>	<b>454</b>	<b>516</b>	<b>554</b>	<b>590</b>	<b>573</b>	<b>61</b>	<b>62</b>	<b>38</b>	<b>36</b>	<b>-17</b>
25'th percentile	355	413	464	501	532	513	58	51	37	31	-19
10'th percentile	318	360	413	458	491	468	42	53	45	33	-23
1'st percentile	246	270	331	376	402	417	24	62	44	26	15

These scores are estimated from the trial tests, but they are on the same scale as (and therefor comparable to) the QuizOne results.